

# Swivel castor with wheel brake 531

## M10 50 PUEL

Furniture Castors Series 530 GW - Wheel PUEL

-20 °C - +60 °C

- +++ swivels easily
- +++ wear resistant
- +++ shock proof
- +++ floor protective
- +++ weather proof

### Wheel

coated in polyurethane, 90±3 Shore Aelectrically conductive  
<10<sup>4</sup>Ω

High quality nylon wheel centre

High quality nylon housing - black

Swivel bearing with combined

plain-ball bearing

Wheel brake - glass fibre reinforced

Wheel axle revited

Swivel castor with wheel brake Wheel-Ø A x width B mm: 52x8+8

Load Capacity kg: 40

Load capacity tested according to EN 12530 and EN 12527

Overall height H mm: 62

Threat mm: M10x15

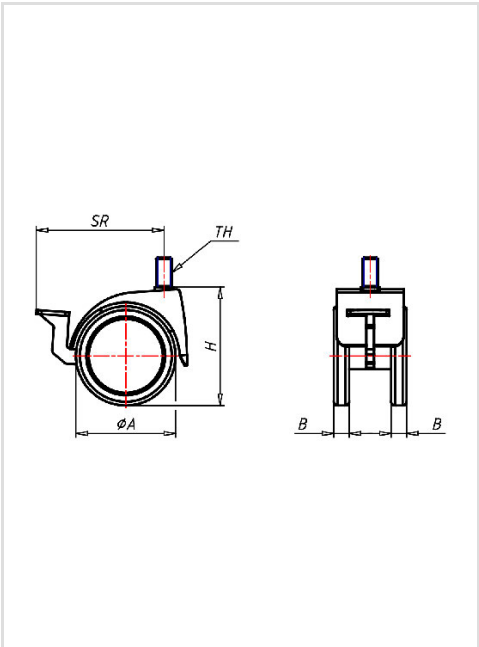
Swivel radius SR mm: 69

Wheel bearing: Nylon plain bearing

### Advantages

- ✓ electrically conductive
- ✓ silent in motion
- ✓ low rolling resistance
- ✓ non-marking
- ✓ high resistance to shocks
- ✓ good chemical resistance

©Copyright 2024 Rollenbau GmbH, www.rollenbau.at 20.05.2024



### Applications

- Health-Professionals